



RICHARD BARRETT

NEW PAINTINGS



Cnicht, 2025
acrylic on canvas 20 x 20 cm

RICHARD BARRETT

NEW PAINTINGS

31 January - 22 February 2026

C E L F G A L L E R Y

2 Roath Park Hall, Bangor Street,
Cardiff, CF24 3NA
www.celfgallery.com info@celfgallery.com

© Celf Gallery & Richard Barrett

RB

Cardiff born Richard Barrett is recognised for his exceptional landscape and cloudscape paintings. He studied Ecology at Sheffield University and after a brief period teaching in London he returned to Sheffield where he is now dedicated to painting full time.

In this exhibition Richard returns to the expansive Welsh mountains, coasts and oceans. His paintings are built by observation, exposure and memory from his many excursions, and capture unique occurrences of the elements. Whether it be the mountains of Eryri, the Pembrokeshire coast or the Black Mountains, recollections and emotional responses shape the development of his paintings. His depiction of weather and light, ranging from dramatic to tranquil, convey a distinct sense of place.

The exhibition is a collection of approximately 33 paintings which show Richard's deep

“My paintings for this show reveal a fusion of the external landscape with the more personal, internal world of emotion. The drama of weather and light act as a vehicle to express my responses to the beauty and majesty of the natural world.”



Atlantic Winds and the Irish Sea, 2025
acrylic on canvas
100 x 100 cm



Warm Embers, Llyn Padarn, 2025
acrylic on canvas
100 x 120 cm



Frozen Light, Crib Gogh, 2025
 acrylic on canvas
 20 x 20 cm



Ochre Ridge, Yr Elen, 2025
 acrylic on canvas
 20 x 20 cm



High Winds and a Sense of Freedom, 2025
 acrylic on canvas
 30 x 30



Clouds Racing over the Barley, 2025
 acrylic on canvas
 60 x 60 cm

The Coastal Sweep of Harlech, 2025
acrylic on canvas
80 x 100 cm





Swept to Shore, Porth Neigwl, 2025
acrylic on canvas
100 x 120 cm



Sweeping Light, Preseli Hills, 2025
 acrylic on canvas
 35 x 45 cm



The Bluestones of Carn Menyn, 2025
 acrylic on canvas
 75 x 90 cm



Pathway, Cwm Idwal, 2025
acrylic on canvas
35 x 45 cm



Tryfan, 2025
acrylic on canvas
75 x 90 cm



Heart and Soul, Yr Wyddfa, 2025
acrylic on canvas
60 x 60 cm



Sea Swell, Porth y Post, 2025
acrylic on canvas
40 x 50 cm



Slate Shore, 2025
acrylic on canvas
75 x 90 cm



Mist Lifting, Penarth Head, 2025
 acrylic on canvas
 20 x 80 cm



Heart of the Black Mountains, 2025
 acrylic on canvas
 20 x 80 cm

Sea Pearl Sky, 2025
acrylic on canvas
60 x 60 cm





A Tumble of Moorland Clouds, 2025
 acrylic on canvas
 35 x 45 cm



Chasing Clouds through Green Fields, 2025
 acrylic on canvas
 25 x 30 cm



Reedbeds Waiting for Dusk, 2025
 acrylic on canvas
 18 x 24 cm



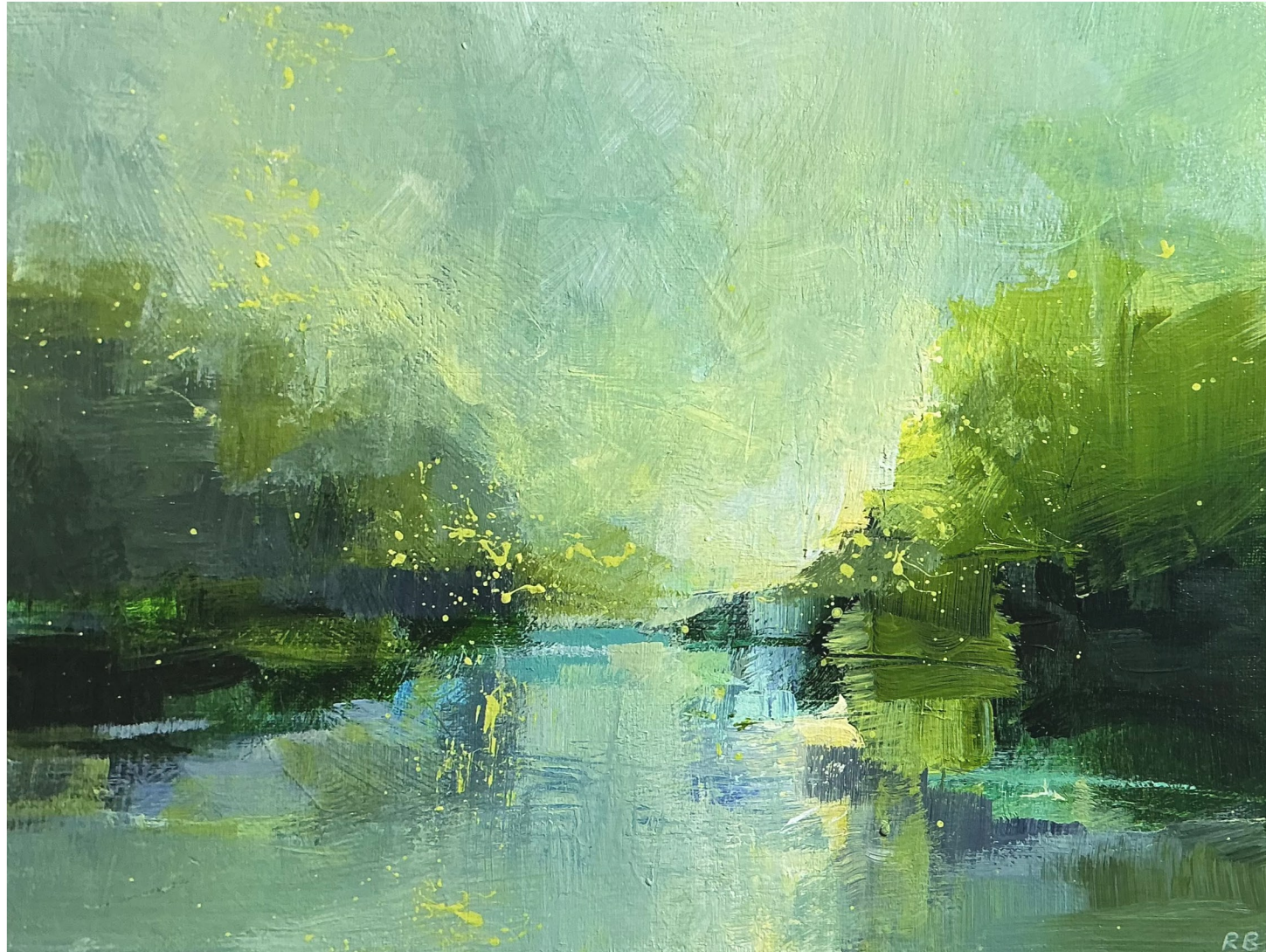
Big Waves and Rocky Shores, 2025
 acrylic on canvas
 25 x 30 cm



Coastal Surge, St Davids, 2025
acrylic on canvas
18 x 24 cm



Porthmelgan, 2025
acrylic on canvas
25 x 30 cm



Spring Reaches the Taff, 2025
acrylic on canvas
18 x 24 cm



Garth and the Taff, 2025
acrylic on canvas
35 x 45 cm

Carving Pathways through Llanberis, 2025
acrylic on canvas
80 x 100 cm



The Shadow of Pen y Fan, 2025
acrylic on canvas
60 x 60 cm

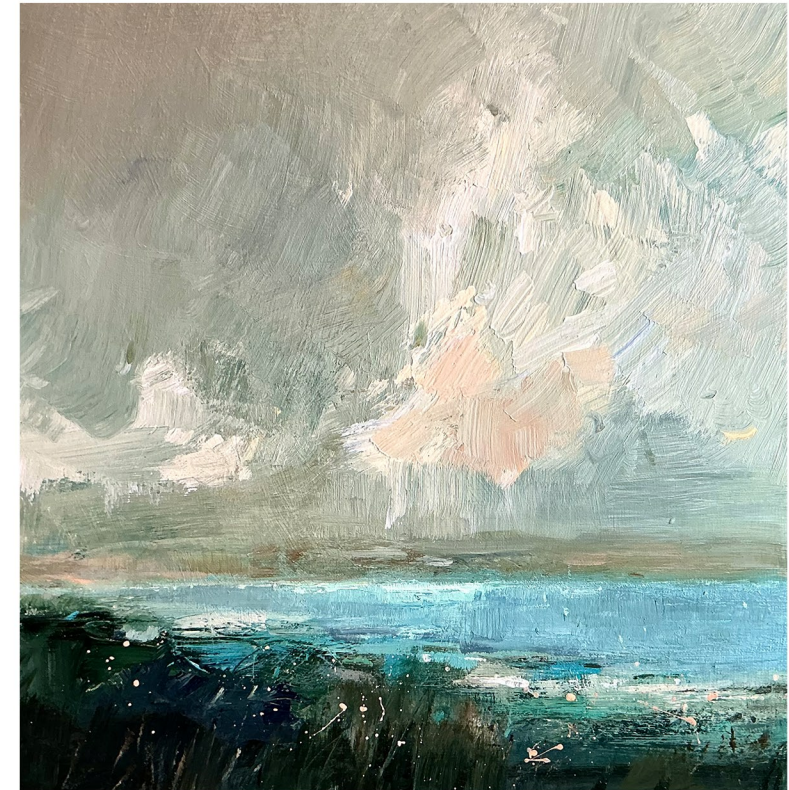


Four seasons, sugar Loaf, 2025
acrylic on canvas
40 x 50 cm



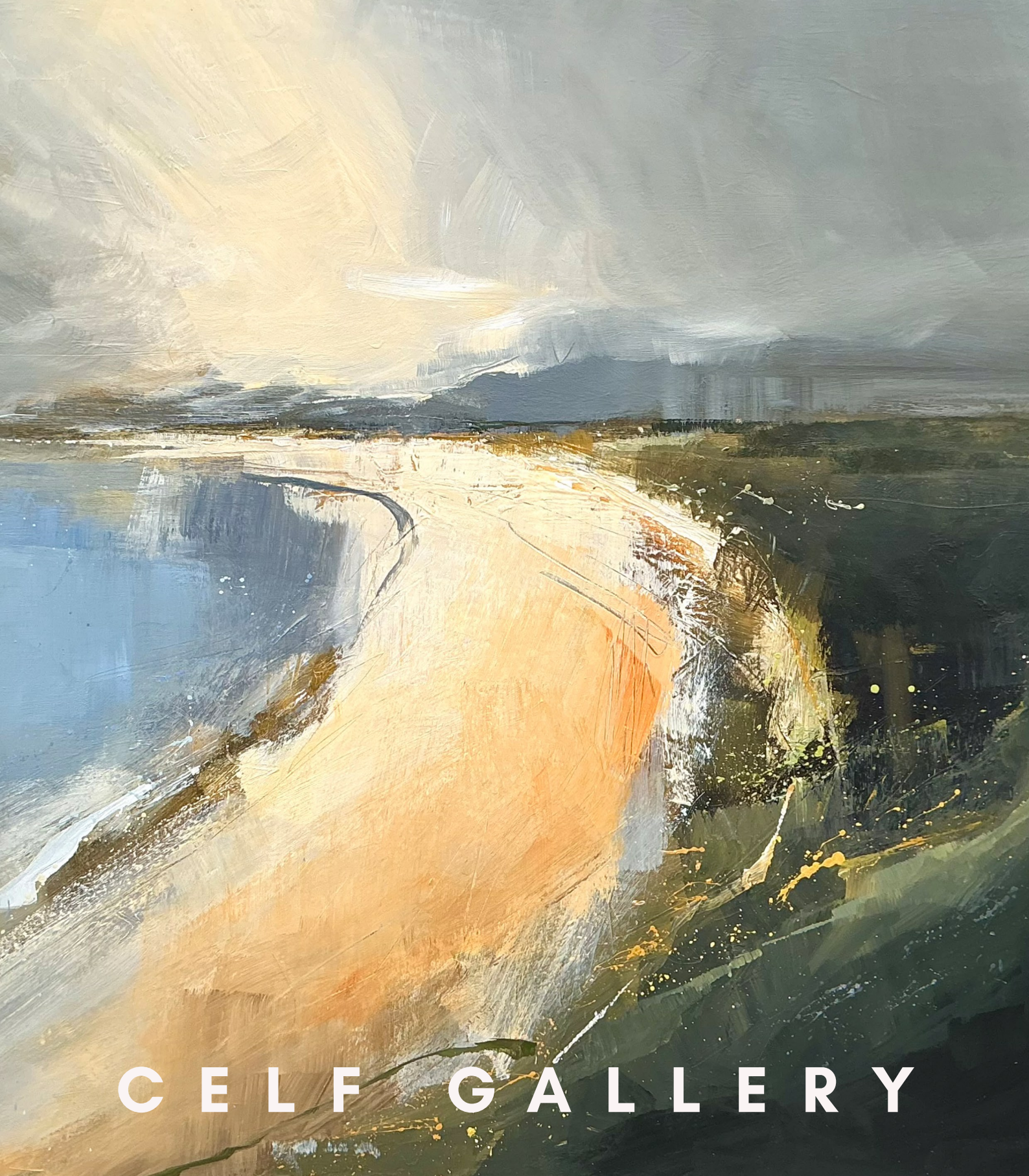
Skies Lifting Three Cliffs Bay, 2025
 acrylic on canvas
 18 x 24 cm

Across the Strait, 2025
 acrylic on canvas
 30 x 30 cm



Shell Pink Sky, Cable Bay, 2025
 acrylic on canvas
 30 x 30 cm





CELF GALLERY